

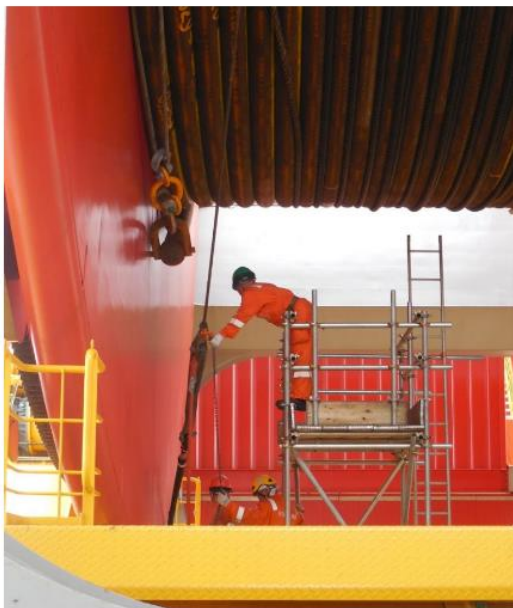
Opticolor Project

<http://www.optimalsafetycolor.com>

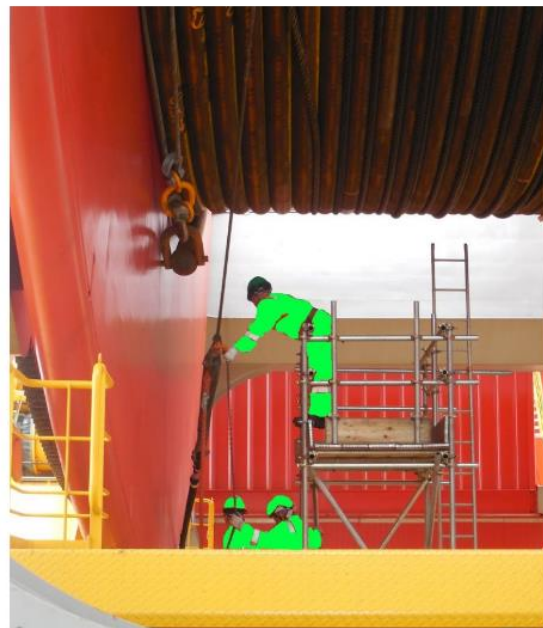
Introduction

At many workplaces (construction sites, factories, warehouses, etc.), employees and visitors are required to wear work-suits or high-visibility vests in order to be noticeable by other workers or adjacent traffic. Being conspicuous reduces the number of situations where people are not seen and accidents happen.

The typically safety colors are red, orange and yellow. These colors are recommended by industry standards (e.g. ISO EN 20471:2013 etc.). However, red, orange and yellow are not always the optimal colors. For example, in an environment where everything is red or yellow, instead of increasing consciousness we have the opposite effect (camouflage). Below pictures show such an example.



Use of orange PPE in an environment overwhelmed by red and yellow colors.



The effect of selecting a more conspicuous safety color

The OptiColor project attempts to:

1. Expand the pallet of recommended safety colors.
2. Formulate a generally applicable methodology for determining the optimal safety color for a specific environment.

The presentation on June 20th will include:

1. Safety at work (3 min)
2. Opticolor project (15 min)
3. Expected Results (3 min)
4. The collaboration with RISE (2 min)
5. About S-Innovations Ltd (2 min)
6. Computer Vision and Offshore Construction (10 min)